

BUCKINGHAMSHIRE

Living

OCTOBER 2017

COMPLIMENTARY

*Fall into
Autumn*

WITH OUR
FASHION SPECIAL

**FENELLA
SMITH**

CERAMICS TO MAKE
YOU SMILE

The Mash Inn

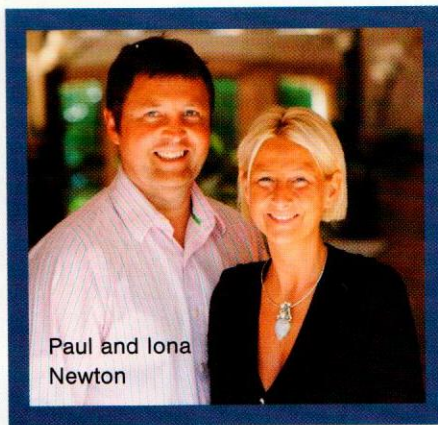
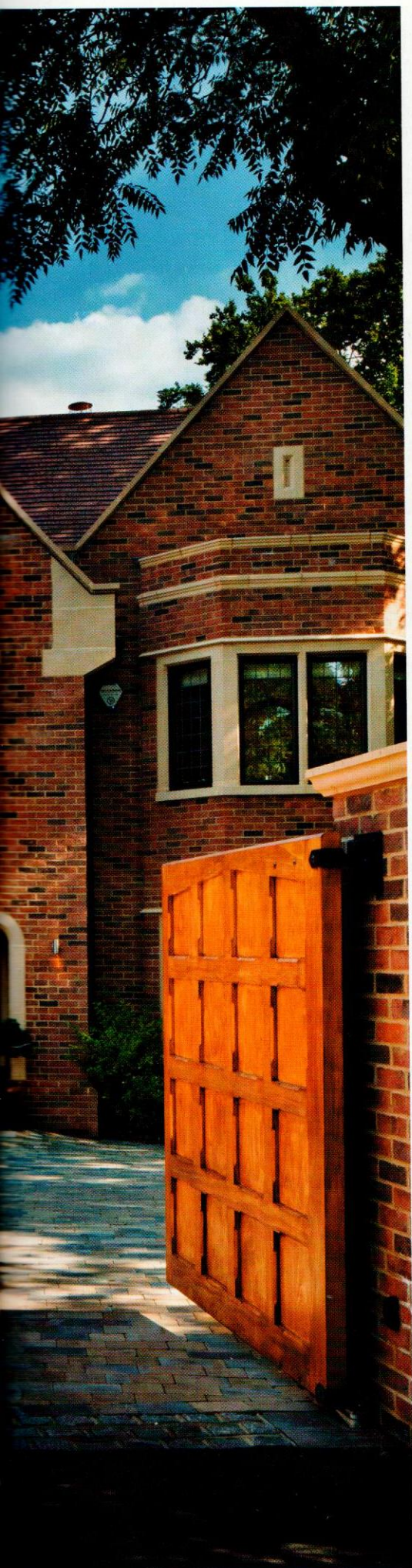
DEFINITELY DIFFERENT
DINING

Seasonal
TRENDS

AUTUMN WALLPAPERS FROM FARROW & BALL



Hurlingham



Paul and Iona
Newton

Creating classics

Buckinghamshire Living meets a couple whose superb award-winning house builds and interiors are bringing them fame and very satisfied clients...

Fifteen years ago, Iona Newton was doing very nicely in the oil industry as a petrol physicist primarily working for Shell.

Her husband Paul, a chartered accountant, was a director of an IT business.

They decided the moment was right to build themselves a house. The result was life changing.

They finished up not only with a property specifically designed to provide a home their children will always associate with their childhood. The venture also led them to found a business creating country houses that 100 years from now will probably be seen as classics of the 21st century.

Iona was the first to take the plunge. After working in the oil industry for 12 years, she became a builder. Ten months later her husband joined her in the company.

Harebrained? Not this couple. Both Paul and Iona have a family background steeped in the construction industry.

They knew what they were doing. No sooner was the building business off the starting block than a sister company was formed to specialise in décor and interiors.

Oakeve builds bespoke high-end houses, mainly in Beaconsfield where easy access to London, high ranking schools and the countrified lifestyle have made it a choice place to live.

"The first house we built was 12,000 sq ft," says Iona – no question of starting small and gradually working up to the style and scale of the award-winning houses they're now known for. The bar was set high from day one.

At this year's *London Evening Standard* New Homes Awards an Oakeve house won

the trophy for "Best Out-of-London Home Built By a Small-Scale Developer".

By the time of the presentation ceremony in May the award winning six-bedroom home in Gregories Road, Beaconsfield (seen in these photographs) had been sold complete with designer furnishings, fixtures and fittings after it had briefly been on the market for £6m.

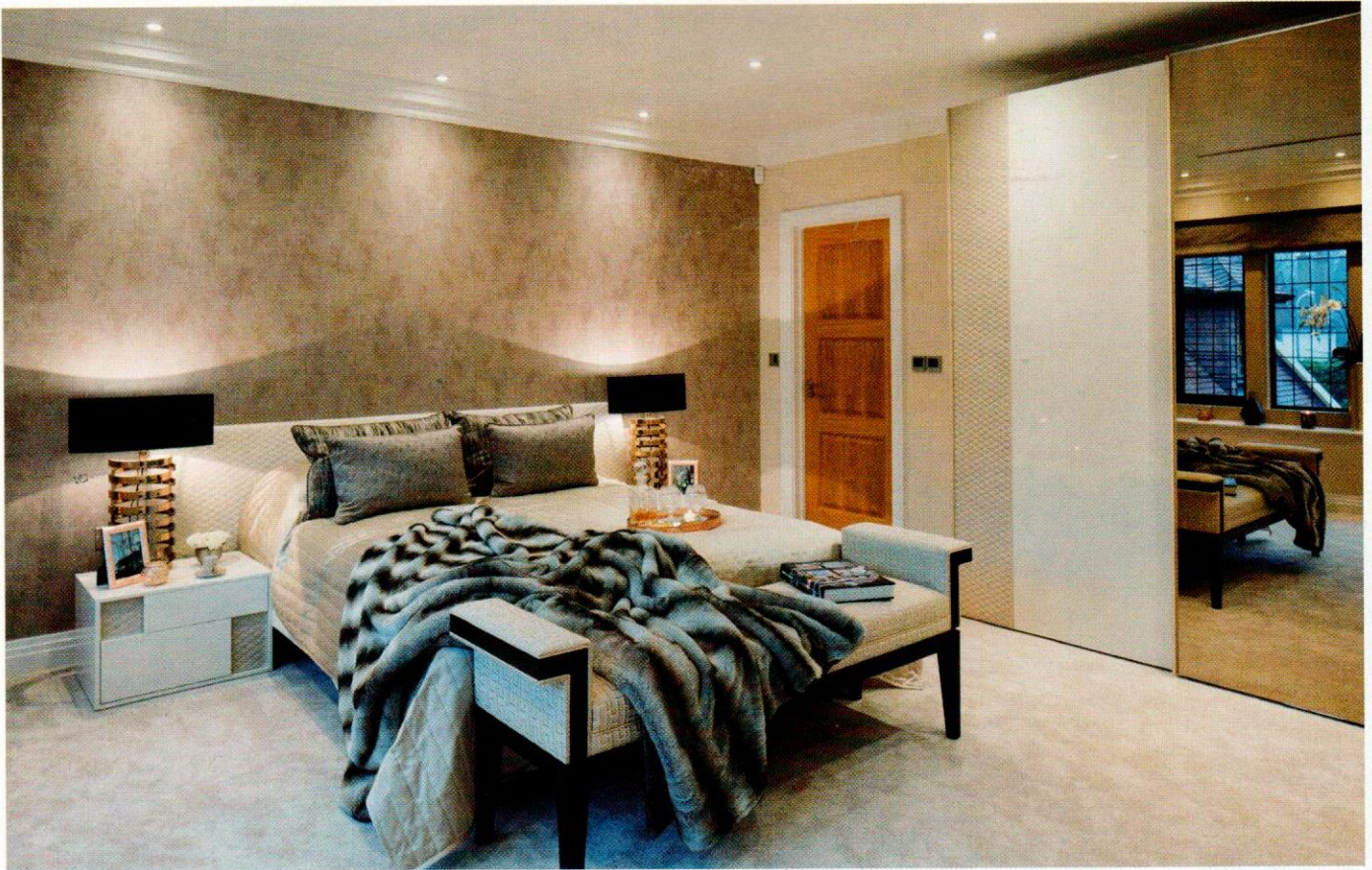
Said the judges: "This tasteful arts and crafts inspired mansion with a grand entrance on a prestige road has nearly 10,000 sq ft of well-proportioned, lavishly-designed space with user-friendly smart technology and all the modern creature comforts including a cinema room."

Each house built by the Chalfont St Giles based company is fully furnished right down to the smallest detail when it's put up for sale to create a vision of how it could look if a professional designer is given carte blanche to dress it as effectively as only those skilled in the art can achieve.

With three school age children, the Newtons know from first-hand experience what families hope to come home to.

"There needs to be a fine balance between luxury and opulence and practicality," Iona says. "The layout of the interior needs to function from every aspect for each generation. On the ground floor, you need rooms that flow from one to the other."

That's why as soon as a new site is acquired, the two sides of the business – the builders and the ten-strong interiors team – get together to divine how best to design the house and furnish it to end up with a home tailored to the likely lifestyle and taste of the future owners. ▶



THE LAYOUT OF THE INTERIOR NEEDS TO FUNCTION FROM EVERY ASPECT FOR EACH GENERATION. ON THE GROUND FLOOR, YOU NEED ROOMS THAT FLOW FROM ONE TO THE OTHER

◀ The largest property they have built so far is a whopping 15,000 sq ft. Iona says the style and structure of the architecture is the starting point for her design team. Much of everything that goes into each house is bespoke. You can't buy much off the shelf that will fit well with proportions in the order of 10,000 sq ft.

"Spatial planning and room layouts are key," she says. "They dictate the specifics for electrical and lighting choices, from there we move on to select tiles, bathrooms, coving, choose the design for interior doors, flues and fireplaces, then comes the furniture and furnishings schedule. From placing orders through to delivery usually takes six months."

Nothing goes through on the nod. There are no quick fixes at this level.

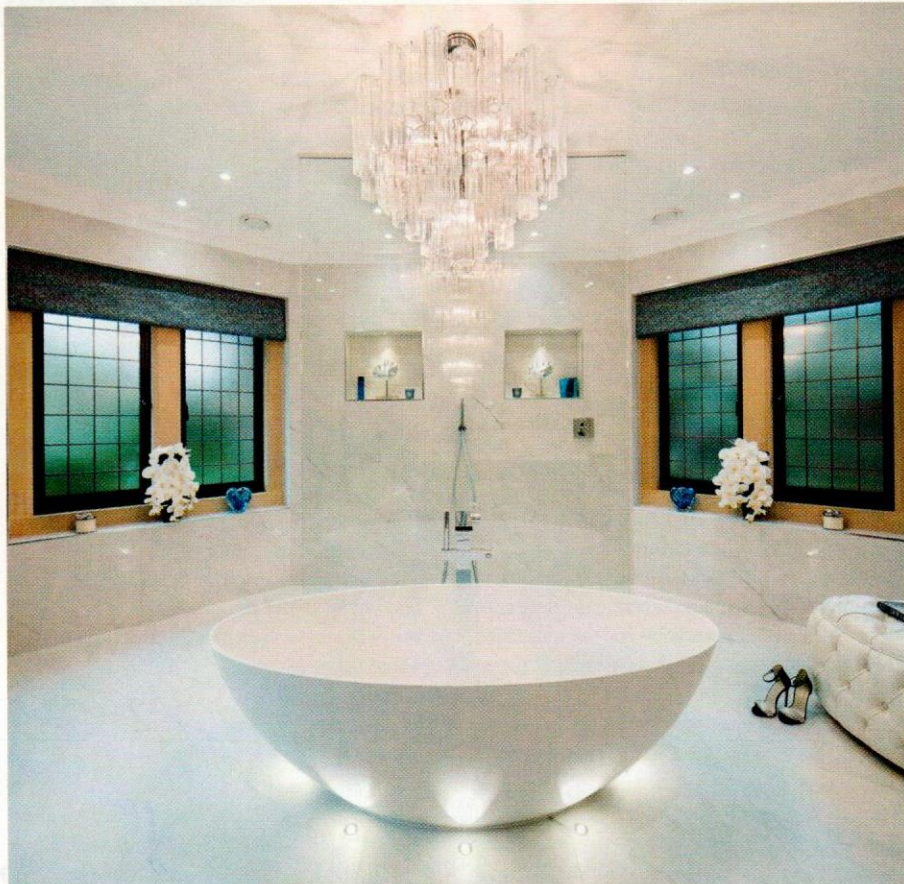
Quite often Oakeve is commissioned to deliver a turn-key package – a house built and also furnished to the specification of the buyer.

Each operation, building and interiors, is a free agent. The interiors team have their own clients – they aren't there purely to provide a furnishing service for the construction side of the firm. Another house in the same road as the *Evening Standard* award-winner is due to be completed shortly before Christmas. It's called Heathcote.

The living area will be 9,941 sq ft, slightly larger than the previous one in Gregories Road.

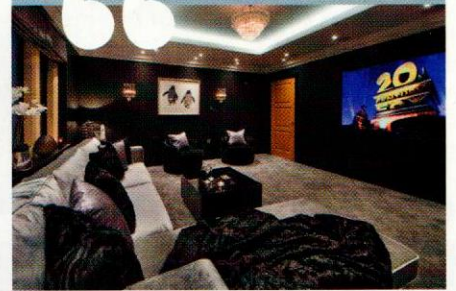
The latest Oakeve "manor house" will have six bedrooms and six bathrooms (five en suite) separate staff annex, six person lift to the two upper floors and a cinema with the full works like an art house.

The ground floor is designed for entertaining on quite a grand scale when needs be. There are two kitchens. The main kitchen is open plan ▶





SPATIAL PLANNING AND ROOM LAYOUTS ARE KEY, THEY DICTATE THE SPECIFICS FOR ELECTRICAL AND LIGHTING CHOICES



◀ with the breakfast area and family room. Star feature (and there's considerable competition for this title) is the climate-controlled walk-in wine-store with tasting station.

The secondary kitchen is for food preparation with walk-in larder, cold store and the usual utility room appliances.

There are oversize roof lanterns, wall-to-wall bi-fold doors and floor to ceiling windows – no dark corners anywhere.

There are five reception rooms in total, many of them with Chesney fireplaces ready to welcome the fortunate people who come to live here.

Already you can feel it's a house with soul. Those who have built and designed it have put their heart into it.

Six million will probably buy it for you.

Meanwhile the "best new home outside London" has been chosen as a finalist for the super prestigious SBID International Design Awards when they're presented in London on October 27.



For more details of current and future Oakeve projects, contact the company on 01494 737461.

THE INTERIOR DESIGNERS' FAVE GO-TO SUPPLIERS

Serip – elegantly luxurious chandeliers

Spiral Cellars – climate controlled wine rooms

Sofa and Chair Company – exceptional bespoke furniture

Reflex Angelo – statement wall sculptures

Ifari – specifically commissioned "sexy crystal" chandeliers